



# Cks1 Polyclonal Antibody

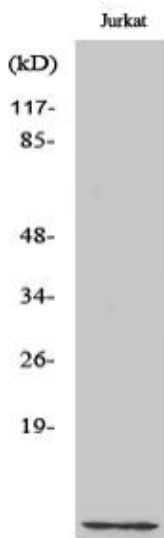
<b>Catalog No</b>	YP-Ab-16712
<b>Isotype</b>	IgG
<b>Reactivity</b>	Human;Mouse
<b>Applications</b>	WB;IF;ELISA
<b>Gene Name</b>	CKS1B
<b>Protein Name</b>	Cyclin-dependent kinases regulatory subunit 1
<b>Immunogen</b>	The antiserum was produced against synthesized peptide derived from human CKS1. AA range:10-59
<b>Specificity</b>	Cks1 Polyclonal Antibody detects endogenous levels of Cks1 protein.
<b>Formulation</b>	Liquid in PBS containing 50% glycerol, 0.5% BSA and 0.02% sodium azide.
<b>Source</b>	Polyclonal, Rabbit,IgG
<b>Purification</b>	The antibody was affinity-purified from rabbit antiserum by affinity-chromatography using epitope-specific immunogen.
<b>Dilution</b>	Western Blot: 1/500 - 1/2000. Immunofluorescence: 1/200 - 1/1000. ELISA: 1/20000. Not yet tested in other applications.
<b>Concentration</b>	1 mg/ml
<b>Purity</b>	≥90%
<b>Storage Stability</b>	-20°C/1 year
<b>Synonyms</b>	CKS1B; CKS1; PNAS-143; PNAS-16; Cyclin-dependent kinases regulatory subunit 1; CKS-1
<b>Observed Band</b>	9kD
<b>Cell Pathway</b>	cyclin-dependent protein kinase holoenzyme complex,nucleoplasm,SCF ubiquitin ligase complex,
<b>Tissue Specificity</b>	Brain,Muscle,Promyelocytic leukemia,Prostate,Tongue,
<b>Function</b>	function:Binds to the catalytic subunit of the cyclin dependent kinases and is essential for their biological function.,similarity:Belongs to the CKS family.,subunit:Forms a homohexamer that can probably bind six kinase subunits.,
<b>Background</b>	CKS1B protein binds to the catalytic subunit of the cyclin dependent kinases and is essential for their biological function. The CKS1B mRNA is found to be expressed in different patterns through the cell cycle in HeLa cells, which reflects a specialized role for the encoded protein. At least two transcript variants have been identified for this gene, and it appears that only one of them encodes a protein. [provided by RefSeq, Sep 2008],
<b>matters needing attention</b>	Avoid repeated freezing and thawing!



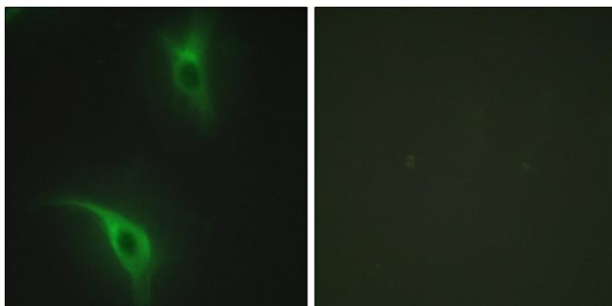
**Usage suggestions**

This product can be used in immunological reaction related experiments. For more information, please consult technical personnel.

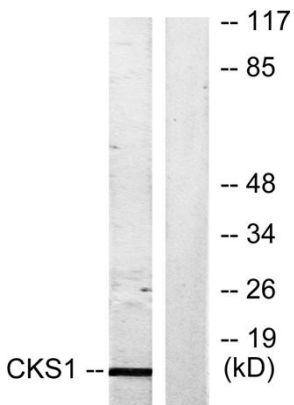
**Products Images**



Western Blot analysis of various cells using Cks1 Polyclonal Antibody cells nucleus extracted by Minute TM Cytoplasmic and Nuclear Fractionation kit (SC-003, Inventbiotech, MN, USA).



Immunofluorescence analysis of HeLa cells, using CKS1 Antibody. The picture on the right is blocked with the synthesized peptide.



Western blot analysis of lysates from Jurkat cells, treated with serum 20% 15', using CKS1 Antibody. The lane on the right is blocked with the synthesized peptide.